



# POLYREFLEX

Expert in Automotive Panels, Parts  
Manufacturing and Custom Solutions



**POLYREFLEX HI-TECH CO., LTD.**

Office Add: PHASE 3 CUIDIWAN, NO.2 JUNMIN RD, ZHANJIANG,  
GUANGDONG, CHINA P.C.: 524044

Plant Add: NO.3 GAOGUI RD, XINGTAN TOWN, FOSHAN,  
GUANGDONG, CHINA. P.C.: 528325

[Https:// www.polyreflex.com](https://www.polyreflex.com)

Tel.: +86 759 3320922

# POLYREFLEX

## Company Profile

Polyreflex is a leading manufacturer specializing in thermoplastic sheets and products crafted from PP, PE, ABS, and PP/PE blended with rubber elastomer TPO. Operating as a manufacturing powerhouse in the industry, Polyreflex boasts six factories strategically located in Dongguan, Guangzhou, Yichun, and Wuxi in China, as well as Binh Duong Province near HCM and Bac Ninh near Hanoi in Việt Nam. Our headquarters are situated in Guangzhou.

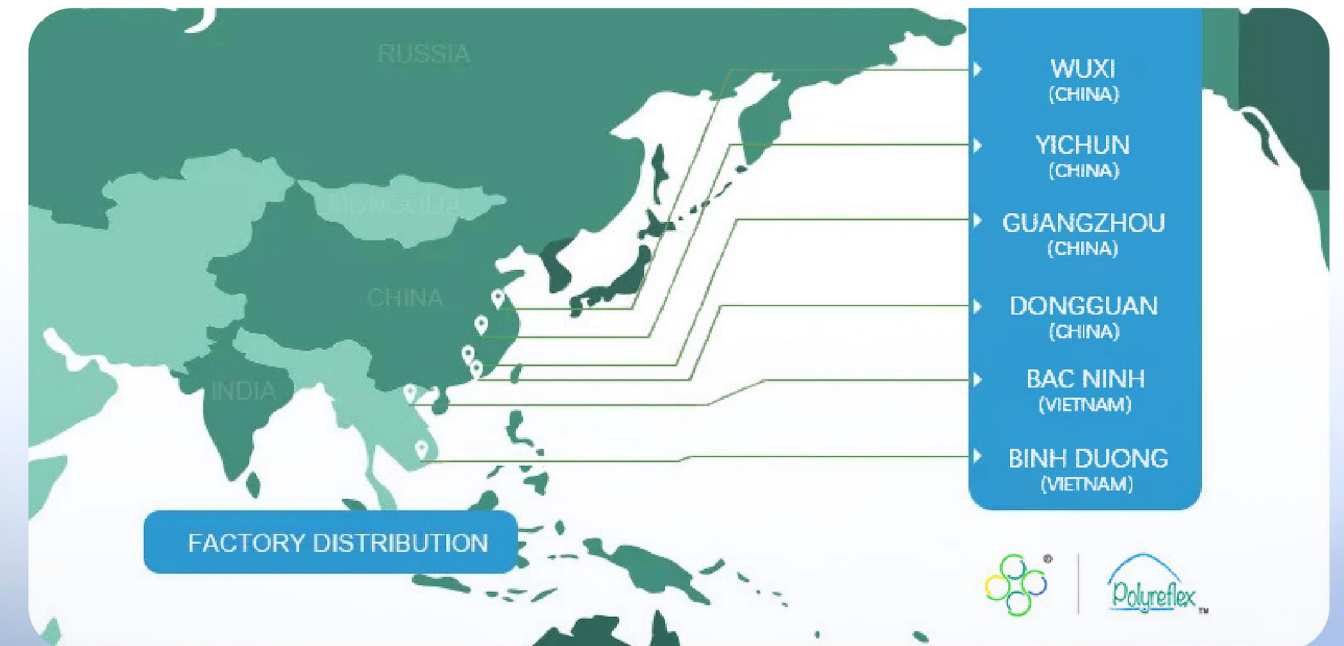
With over 15 years of industry expertise, Polyreflex excels in producing plastic honeycomb panels, PP, PE, ABS, and TPO plastic sheets/rolls that find extensive applications in the automotive sector. We take pride in serving esteemed clients such as TOYOTA, MITSUBISHI, NISSAN, HYUNDAI, AUDI, LOTUS, MAZDA, BYD, Q'STRAIT, XIAOPENG, AND XIAOMI Automotive, serving as both first and second-tier material boards suppliers, as well as suppliers of completed products. We welcome you to join us for mutually beneficial cooperation.

## Brand Inspiration

- Interconnected smiles of clients, suppliers, partners, and employees merge into infinite symbols, symbolizing endless innovation.
- Colorful products offer better living possibilities.
- Polyreflex: A thermoplastic reflection.



## Partners





# POLYREFLEX HI-TECH CO., LTD.

WhatsApp/Wechat: +8613828266785  
https://www.polyreflex.com/  
Email: helen@polyreflex.com



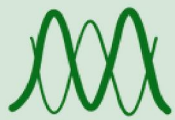
## TPO Sheet

Polyreflex Thermoplastic Polyolefin (TPO) is a composite material comprising polyolefin (PP or PE), rubber, and specific fillers.

Classified within the TPE family, TPO offers excellent hardness, flexural fatigue, impact, and chemical resistance. It's highly resistant to UV radiation and extreme temperatures, making it ideal for outdoor use. TPO sheets are commonly used in injection molding and vacuum forming projects.



Weather Resistance



High Elasticity and Flexibility



Chemical Resistance



Impact Resistance

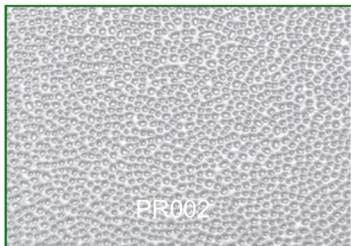


Easy to Mold

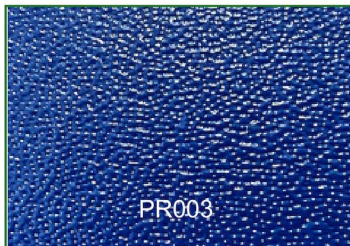
## TEXTURE OPTIONS



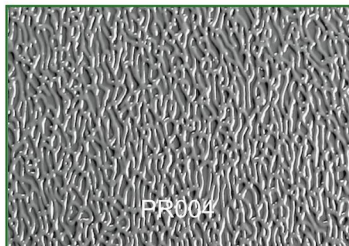
PR001



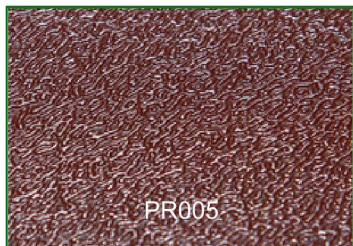
PR002



PR003



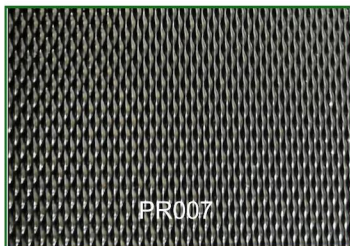
PR004



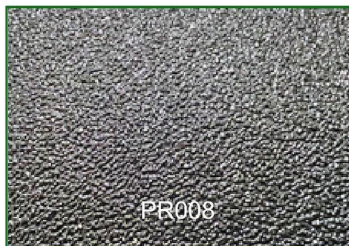
PR005



PR006

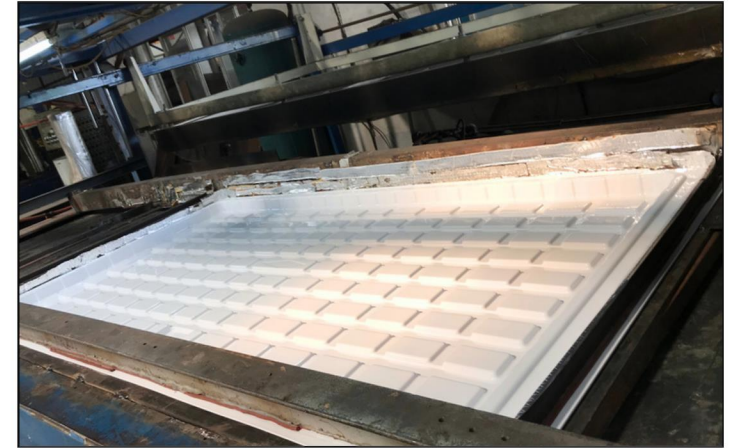


PR007



PR008

## THERMOFORMING SERVICE



## APPLICATION

### AUTOMOTIVE FLOOR MATS

**Advantage:**

TPO Sheet offers excellent durability and flexibility, ideal for protecting car interiors while contributing to fuel efficiency.



### TRUNK LINERS

**Advantage:**

Its high impact resistance and lightweight nature make TPO Sheet a reliable choice for trunk liners, providing scratch and spill protection.



### CARGO AREA LINERS

**Advantage:**

TPO Sheet's lightweight and chemical resistance make it ideal for cargo area liners, protecting against scratches and simplifying maintenance.





# POLYREFLEX HI-TECH CO., LTD.

WhatsApp/Wechat: +8613828266785

<https://www.polyreflex.com/>

Email: [helen@polyreflex.com](mailto:helen@polyreflex.com)



## Car Mats

Polyreflex floor mats are crafted from a selection of composite advanced thermoplastic elastomers (TPO/TPE/TPV), ensuring they are odorless, non-toxic, and retain flexibility even in extreme cold conditions. These mats offer robust protection for your vehicle's flooring.

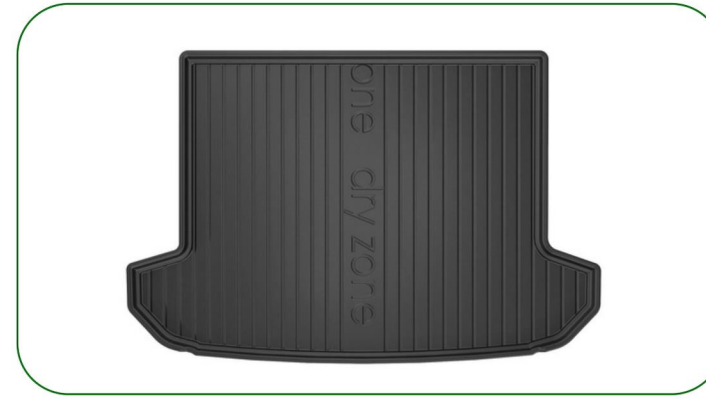
Our floor mat sets comprise full set of front and rear floor mats, all designed in universal sizes with trim lines for a tailored fit. They represent the pinnacle of universal trim-to-fit mat technology, featuring a distinct shape for both driver and passenger floors.

### FLOOR MATS



• Contact us for a list of available car floor mats and trunk liners for various models along with pricing.

### TRUNK MATS



### ADVANTAGES



Laser-scanned for a perfect fit



High edges prevent water spillage



No mold, no odor, easy to clean



Wearproof with anti-slip properties



Original buckles prevent shifting



One-piece molded ensures safety

### WHY CHOOSE US



In-house material production ensures quality control



Design and customization expertise for tailored solutions



Mold-making capabilities for precise fitting



One-stop solution for your car mat needs



Professional international trade team for attentive service



# POLYREFLEX HI-TECH CO., LTD.

WhatsApp/Wechat: +8613828266785  
https://www.polyreflex.com/  
Email: helen@polyreflex.com



## Trunk Mat Panel

Crafted from flame retardant PP honeycomb panel, Polyreflex car trunk mat offers durability and water resistance for trunk protection. Its lightweight yet sturdy structure ensures easy installation, maintenance, and compatibility with various vehicle models.

The mat shields the trunk from scratches, spills, and stains; provides a non-slip surface for securing cargo; and suits sedans, SUVs, trucks, and vans, enhancing trunk functionality.



Lightweight



Impact Resistant



Waterproof



Flame Retardant



No VOC Emission



Recyclable

## STRUCTURE OPTIONS



Single Skin + Honeycomb Layer

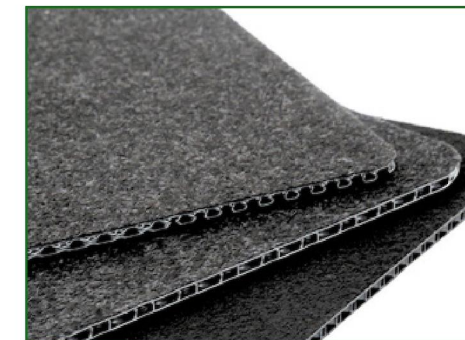


Double Skin + Honeycomb Layer

## SURFACE OPTIONS



80g/m2 Non-woven Fabric



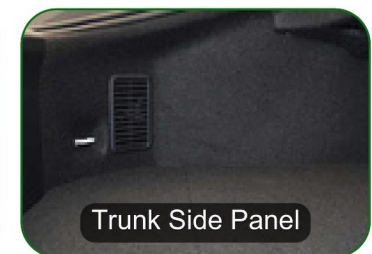
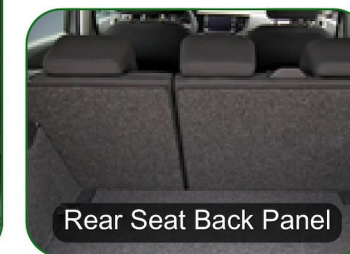
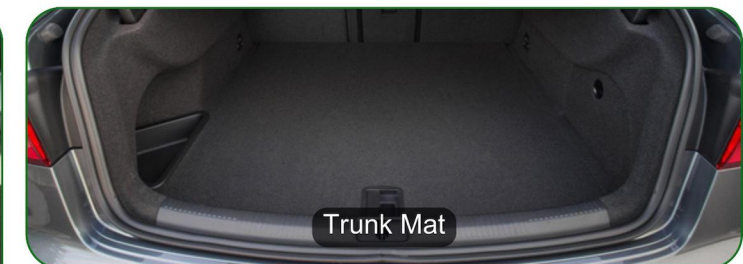
250g/m2 Non-woven Fabric



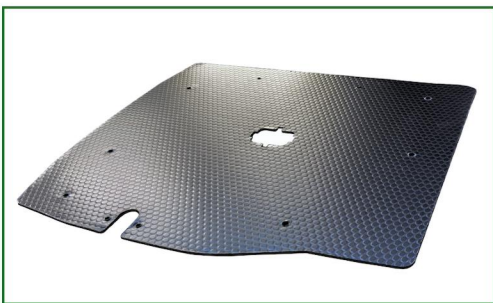
Leather

## APPLICATION

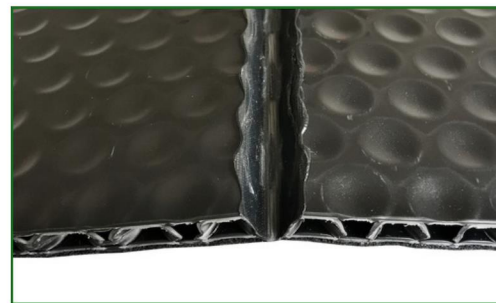
We not only provide trunk mat materials but also offer fully customized trunk mats tailored to fit various car models and brands. Our trunk mats, crafted from non-woven fabric honeycomb panel, are available for car brands such as Toyota, Mitsubishi, Nissan, Hyundai, Audi, Lincoln, Volvo, Mazda, and more. At Polyreflex, we ensure a perfect fit for every vehicle.



## PRODUCTION PROCESS



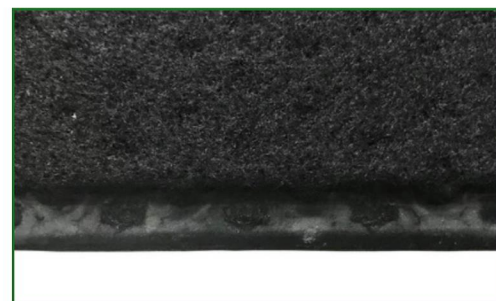
Punching



Creasing



Sew Sealing



Heat Pressing

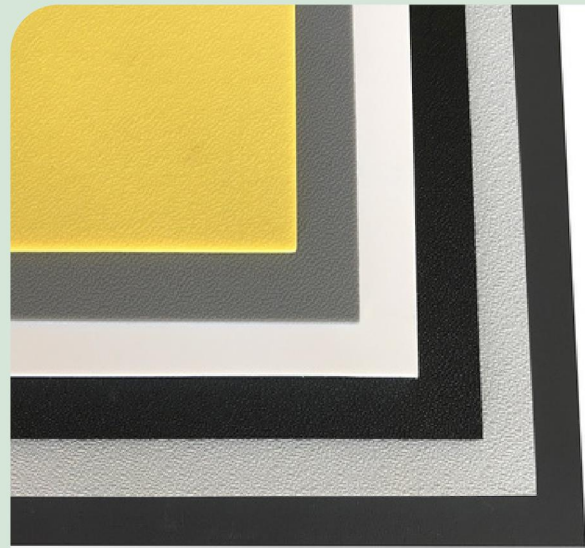


# POLYREFLEX HI-TECH CO., LTD.

WhatsApp/Wechat: +8613828266785

<https://www.polyreflex.com/>

Email: [helen@polyreflex.com](mailto:helen@polyreflex.com)



## ABS Sheet

Polyreflex ABS Sheet, a premium engineering thermoplastic renowned for its versatility and strength. Formed through precise polymerization of styrene and acrylonitrile on a thermoplastic rubber base, our ABS Sheet offers an optimal balance of toughness, hardness, and rigidity.

Whether for laser cutting, CNC cutting, thermoforming, or custom machining, our ABS sheets deliver consistent results.



Mechanical Strength



Chemical Resistance



Thermal Stability



Electrical Insulation

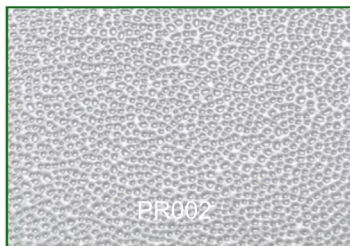


Processability

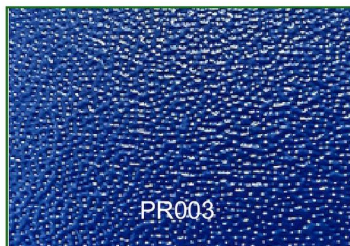
## TEXTURE OPTIONS



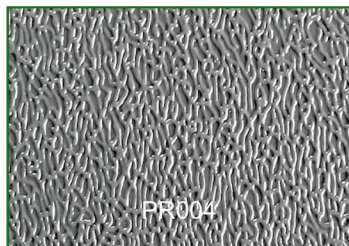
PR001



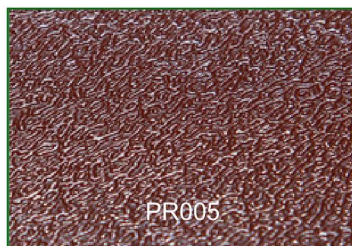
PR002



PR003



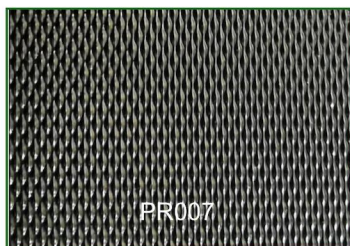
PR004



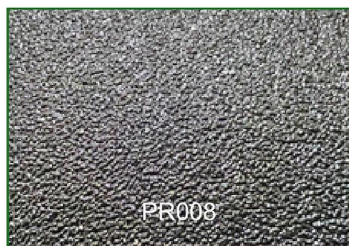
PR005



PR006



PR007



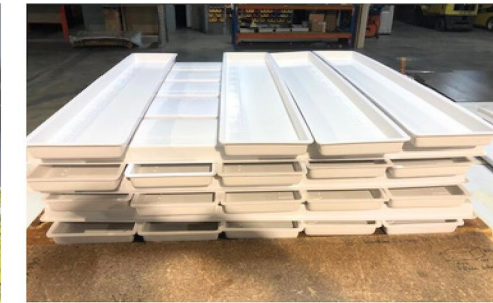
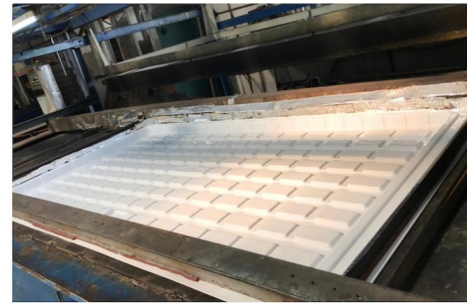
PR008

## PROCESSING TYPES

### CNC Machining



### Vacuum Forming



## APPLICATION





# POLYREFLEX HI-TECH CO., LTD.

WhatsApp/Wechat: +8613828266785

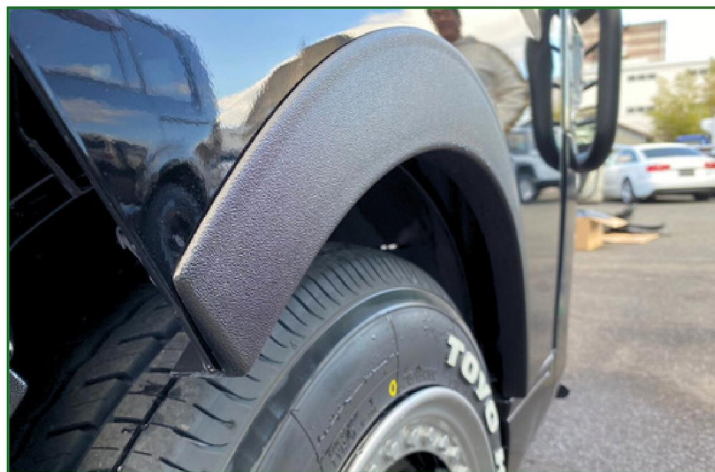
<https://www.polyreflex.com/>

Email: [helen@polyreflex.com](mailto:helen@polyreflex.com)



Fender flares, also known as wheel arch extensions, are accessories installed on a vehicle's fenders to provide additional coverage for overhanging wheels and tires. Each flare is custom molded to fit the contours of the vehicle's fenders precisely.

Polyreflex specializes in manufacturing fender flares designed to accommodate various vehicle models, ensuring a perfect fit. These flares are particularly useful when wheel offset is minimal, extending outward to cover protruding wheels and tires and ensuring compliance with regulations.



# Vacuum Forming

At Polyreflex, we specialize in customized vacuum forming services, also known as thermoforming. This process involves heating a thermoplastic sheet, stretching it over a mold, and vacuuming it tightly onto the mold's surface. It enables us to create precise, intricate shapes with various thicknesses, ideal for lightweight yet durable products.

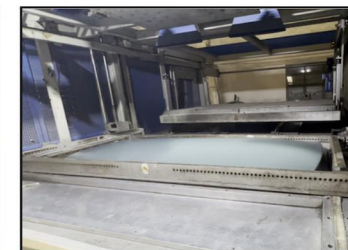
We work with a wide range of thermoplastic materials, including ABS, TPO, HDPE, PP, HIPS, PMMA, PC, and more. Each material offers unique properties and advantages, allowing us to tailor the vacuum forming process to meet the specific requirements of our customers' projects.



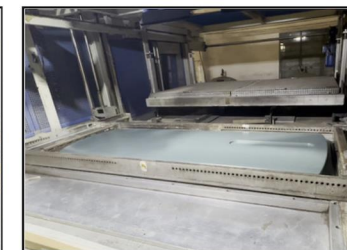
## MANUFACTURING PROCESS



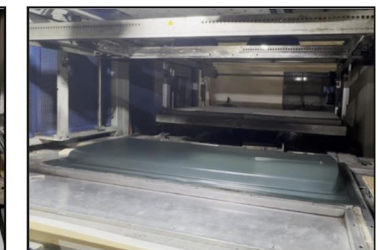
Heating to Soften



Blowing



Vacuuming



Cooling to Form

## VACUUM FORMED PARTS





## POLYREFLEX HI-TECH CO., LTD.

WhatsApp/Wechat: +8613828266785

<https://www.polyreflex.com/>

Email: [helen@polyreflex.com](mailto:helen@polyreflex.com)



The kick panel in a car is a protective panel positioned at the bottom of the interior door frame, near where passengers step when entering or exiting the vehicle. Its main purpose is to shield the door frame from scuffs, scratches, or damage caused by footwear. Moreover, it contributes to the interior's aesthetics and provides a polished appearance to the door area.

Crafted from high-quality ABS and carbon fiber material, our kick panels are exceptionally durable and resistant to wear. Installation is effortless with double-sided tape provided on the back — simply peel and adhere for a secure fit.



## APPLICATION

### BMW X1 X2

- Sleek kick panels tailored for BMW X1
- Perfect fit and seamless integration
- Provides both protection and style



### Mercedes-Benz GLC

- High-quality kick panels for Benz GLC
- Matches vehicle's design with precision
- Offers superior protection and aesthetic appeal

### BMW X3

- Premium kick panels designed for X3
- Ensures durability and sophistication
- Precision-crafted for seamless integration







# POLYREFLEX HI-TECH CO., LTD.

WhatsApp/Wechat: +8613828266785

<https://www.polyreflex.com/>

Email: [helen@polyreflex.com](mailto:helen@polyreflex.com)



## APPLICATION

### SUV

- Durable mud flaps designed for SUVs
- Offers protection from mud, water, and debris
- Enhances the appearance of your vehicle



### Heavy-Duty Truck

- Robust mud flaps engineered for heavy-duty trucks
- Withstands harsh conditions and prevents damage
- Ensures safety and longevity for your truck

### Pickup Truck

- Tough mud flaps tailored for pickup trucks
- Provides effective defense against mud and debris
- Adds functionality and style to your truck



## MUD FLAP



Mud flaps are typically crafted from durable composite materials such as ABS plastic, thermoplastic resin, LLDPE, or polypropylene, ensuring exceptional toughness. Often smaller in size, they are seamlessly integrated into the vehicle's body and commonly color-matched to its exterior.

Mud flaps excel in diverting water, mud, and minor debris away from the vehicle. However, larger debris, such as rocks, may lead to surface cracks and notable abrasions.

## PRODUCT IMAGES

